

# Price list Master system 2024



Simply flawless:

# The Master system for an impeccable overall impression

Form, colour, functionality – the Zambelli Master system redefines the tasks of roof drainage with a view to the big picture. Based on the overall architecture of the building, we have developed an integrated system, adaptable in a variety of ways.



## Sales Office Germany

### Sales team

Tel. +49 8555 409-0  
de-sales@zambelli.com

### Peter Brenner

Head of Export  
Tel. +49 8555 409-63  
Mob. +49 171 7630011  
peter.brenner@zambelli.com

## Technical Advisor

### Josef Herda

Mob. +420 771 227 713  
josef.herda@zambelli.com



## Online configurator



**Test the Zambelli configurator  
now!** [konfigurator.zambelli.com](http://konfigurator.zambelli.com)



### Perfect colour matching with a simple click

The colour spectrum of the Robust Master system enables you to coordinate the colours of roof tiles, windows, walls and roof drainage. Our online configurator helps you match all the components. It is intuitive to use and, of course, free of charge. Just give it a try!

# Robust colour coating

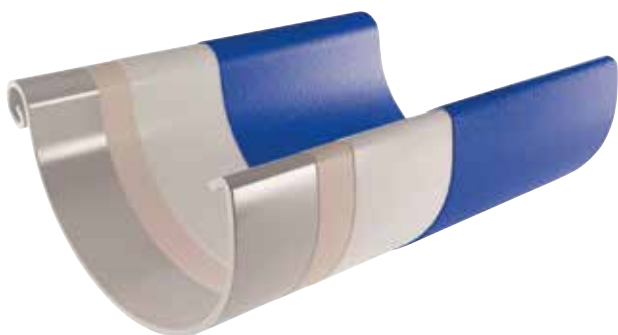
As the name indicates, this innovative colour coating provides a hard, structured, and particularly resistant surface. It lends the Zambelli roof drainage elements a uniform colour and gloss level that is scratch resistant and colourfast.

## Robust colour coating convinces with excellent values:

- ▶ Scratch resistant  $\geq 30$  N according to EN13523-12:2004
- ▶ UV resistant RUV 4 according to EN10169-2

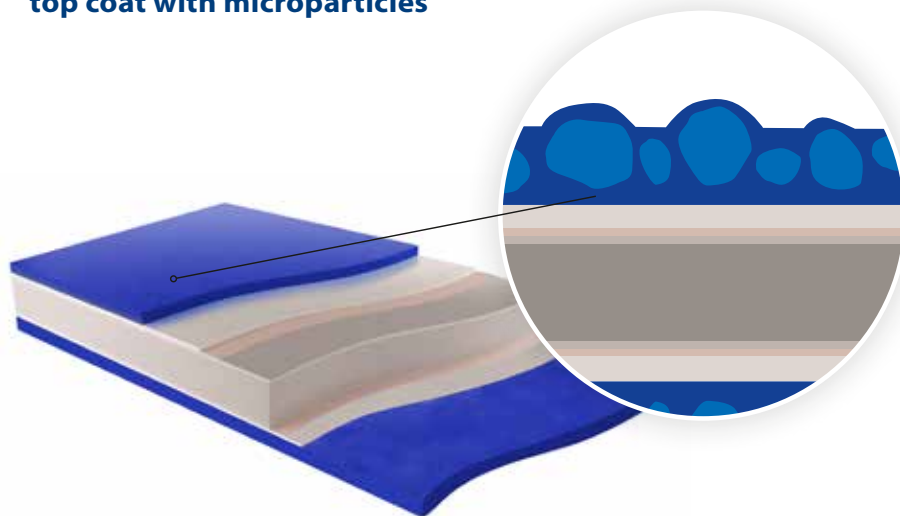


## The structure of Robust colour coating



- Robust top coat (approx.  $20 \mu\text{m}$ ) on a polyester basis for maximum scratch resistance
- Primer (approx.  $5 \mu\text{m}$ ) for perfect adhesion and solid corrosion protection
- Zinc-magnesium coating (min.  $120 \text{ g/m}^2$ ) for durable corrosion protection
- Steel strip specially optimised for drainage applications

## Excellent all-round protection: top coat with microparticles



- colofer® top coat
- microparticles

The Master system is available in:

RAL 7016 anthracite

RAL 9002 grey white

RAL 9005 jet black

RAL 9006 white aluminium

RAL 9007 grey aluminium

Testa di Moro

copper

titanium-zinc

strip galvanized steel



Images are similar:  
Slight deviations in colour are due to the printing process.





## Combined advantages of the Master system

As an independent product line, the Master system offers you the security of complying with basic normative principles at all times. The roof drainage system is completed by traditional roof plumbing products. From downpipe to valley flashing, the overall impression is convincing.



### Compatible

With the Master system, the elements consistently fit together. The product handling is simple and fun, the assembly is extremely efficient.



### Uniform

All components of the Master system are made of the same material. The system is completed by flashings and metal strips. The overall consistent appearance is highly appealing.



### DIN compliant

With the Master system, you meet the applicable specifications, as Zambelli is compliant with the established Germany industry standards.



### Environment

Manufactured in accordance with prevalent industry standards regarding environmental protection and sustainability.

# Robust for roof plumbing supplies

Supplementary strips and accessory sheets from our Robust product line perfectly complement our Master system. Dormer cladding and valley flashing, for example, can be designed to match the look of the roof drainage system. The Robust product line is also ideal for making window sills and chimneys.

Offered in a coil, the innovative Robust steel strip has an excellent edge and seam quality, and is colour-coated on both sides. Its highly scratch-resistant surface withstands the strain of mechanical processing.



Available in all  
standard colours!







sizes

packaging information

pc

art.no.

price

### Gutter

according to EN 612, bead form II, price per meter, connection duct

400	15	144140	15.40																
333	15	144133	12.40																
280	15	144128	11.25																
250	15	144125	10.35																

### Corner

outside corner 90°, half-round, seamless deep-drawn, stabilization through fixed bead, continuous water bend, connection duct

400/340	2	144400	42.45																
333/300	5	144405	25.60																
280/300	5	144410	25.25																
250/300	5	144415	25.05																

### Corner

inside corner 90°, half-round, seamless deep-drawn, connection duct

400/340	2	144800	42.45																
333/300	5	144805	25.60																
280/300	5	144810	25.25																
250/300	5	144815	25.05																

### Gutter Connector

with bead connector, fixing lock and flexible Z-spring, shape according to DIN 18461

400	10	145800	15.10																
333	10	145805	11.40																
280	10	145810	11.20																
250	10	145815	11.00																

### Gutter Sieve

leaf collector for pushing into gutter drain, galvanized

120	25	128405	4.95																
87-100	25	128410	4.20																
75-80	25	128420	4.00																

### Gutter Stark® Leaf Guard

for halfround gutters, length 200 resp. 100 cm, incl. supports and fixing clips, aluminium blank, price per meter

400/2000	20	158500	21.85																
333/2000	20	158505	19.00																
280/2000	20	158510	15.75																

### Gutter Hook

long version, with reinforcing seam, spring/spring

400-25/8+5	25	148600-LANG	7.90																
333-30/5+5	25	148605-LANG	6.80																
280-30/5+5	25	148610-LANG	6.05																
250-25/5+5	25	148615-LANG	6.00																

### Fascia Hanger

fix to the wall, spring/spring, flat to the wall against tilting effect

400	50	148625	5.45																
333	25	148630	4.10																
280	25	148635	4.05																
250	25	148640	4.00																

### Adjustable Unit

variable angle for inclination, for dimensions 333, 280, 250

333-250	25	148667	4.30																
---------	----	--------	------	--	--	--	--	--	--	--	--	--	--	--	--	--	--	--	--

### Stop End

large version, half-round, for horizontal gutter installation, for seaming (both sides)

400	50	146001	3.02																
333	25	146006	2.07																
280	25	146011	1.98																
250	25	146016	1.98																

● RAL 9002 grey white ● Testa di Moro ● RAL 7016 anthracite grey ● RAL 9005 jet black ● RAL 9006 white aluminium\* (15% surcharge) ● RAL 9007 grey aluminium\* (15% surcharge)

sizes

packaging information

pc

art.no.

price

### Stop End

half-round, with rubber sealing, for simple push-on installation



333	25	146705	7.00																	
280	25	146710	6.60																	
250	25	146715	6.30																	

### Outlet

oval, with compass card, reinforced bend, eye and bevel



400/120	10	140005	24.50																	
333/100	25	140015	15.70																	
280/80	25	140050	15.95																	
250/80	5	140055	15.95																	

### Hopper

square version, without overflow



120	4	141905	206.40																	
100	4	141910	200.00																	
80	4	141920	200.00																	

### Hopper

small version, runoff off-centre



100	6	141990-100	79.85																	
80	6	141990-80	79.85																	

### Fascia Outlet for drainage of flat roofs, with grommet



120	10	147099-120/110	135.00																	
100	10	147099-100/110	135.00																	
100	10	147099-100/75	135.00																	
80	10	147099-80/75	135.00																	

### Downpipe

according to EN 612, seamed, price per meter



120	8	147912	16.25																	
100	8	147910	13.05																	
80	8	147980	11.40																	

### Bracket

for downpipe, with thread socket M10 for screw



120/M10	25	147712	7.25																	
100/M10	25	147710	6.90																	
80/M10	25	147780	6.90																	

### Bracket

for installation on wood



100	20	148010	7.30																	
80	20	148080	7.30																	

### Screw

for downpipe bracket with thread socket, galvanized, M10



300/M10	25	127610-300	2.60																	
200/M10	25	127610-200	1.18																	
140/M10	50	127610-140	0.84																	

### Elbow 72°

single seamed, made out of pipe



120/72°	10	142405	17.35																	
100/72°	25	142410	14.50																	
80/72°	25	142430	13.65																	

sizes packaging information

pc art.no. price



**S-Curve**

single seamed, made out of pipe

120	10	143600	21.60																
100	10	143605	16.80																
80	10	143620	16.35																



**Downpipe Connector**

120	25	147100	11.15																
100	25	147105	10.45																
80	25	147115	10.15																



**Downpipe Junction**

72°

120/100-72°	5	147012-100-72	48.00																
100/100-72°	10	147010-100-72	42.20																
100/80-72°	10	147010-80-72	42.20																
80/80-72°	10	147080-80-72	40.55																



**Rainwater Pipe Flap**

with sieve

120	9	147300	82.95																
100	10	147305	57.50																
80	10	147315	57.50																



**Pipe Cover**

without Bead

120/150	20	146805	14.40																
---------	----	--------	-------	--	--	--	--	--	--	--	--	--	--	--	--	--	--	--	--

with Bead

100/115-120	20	146815	12.10																
80/115-120	20	146825	10.80																



**Correction Spray**

available in our standard colours

400 ml	1	100110	30.45																
--------	---	--------	-------	--	--	--	--	--	--	--	--	--	--	--	--	--	--	--	--

**Dicht 7**

universal glue and sealing agent, 310 ml cartridge, Shoregrade 60 without solvents, humidity-resistant, coatable, odourless, colour: grey

310 ml	12	100000	26.95																
--------	----	--------	-------	--	--	--	--	--	--	--	--	--	--	--	--	--	--	--	--



**Bending tool for gutter hooks**

L = 700 mm

	1	100002	259.80																
--	---	--------	--------	--	--	--	--	--	--	--	--	--	--	--	--	--	--	--	--

# The galvanized Master system

Galvanized steel has proved its worth in sheet metal processing as a construction metal of the highest strength and of durable corrosion protection. A roof drainage system made of galvanized steel can withstand high wind and snow loads. In addition, its linear expansion is lower than that of zinc, copper & co.

## The galvanized Master system makes things easy for you:

- ▶ regarding appearance, as it creates a uniformly flawless surface,
- ▶ regarding quality, as this new material is sturdy and durable,
- ▶ regarding the accuracy of fit, as everything is perfectly matched, and regarding the price, which is much lower than that of other construction metals.



### A visible difference



strip galvanized



individually galvanized

Thermal expansion values in comparison  
mm/m\*100K

Steel	Ferritic stainless steel	Austenitic stainless steel	Copper	Zinc	Aluminium
1.20	1.06	1.60	1.65	2.20	2.38

## Not only the material is top notch

In order to manufacture the whole Zambelli Master system from strip galvanized steel, we have developed our own production processes. We are therefore not only able to guarantee a uniform surface throughout the Master system, but also to meet the high-

est standards of quality and durability. In addition, we can now dispense with individual galvanisation, thus protecting the environment and making our roof drainage products more sustainable.



### ◀ The Zambelli Master outlet

The unobtrusive seam on the back is created by a special welding process. The corrosion protection of the zinc coating is thus retained.

### The Zambelli Master bend ▶

The galvanized Master bend is now created directly out of a folded tube, making the bend identical to the downpipe in appearance and design.



**PATENTED**

# Assembly instructions

Easy to follow: Zambelli offers you helpful step-by-step instructions for the most important roof drainage products.



Video Installation Instructions

[installation-movie.zambelli.com](http://installation-movie.zambelli.com)



Or download the assembly instructions  
from the Zambelli website

[installation-robust.zambelli.com](http://installation-robust.zambelli.com)





sizes packaging information

pc art.no. price

### Gutter

according to EN 612, bead form II, price per meter, connection duct



400	15	124140	10.85																
333	15	124133	9.25																
280	15	124128	8.05																
250	15	124125	8.05																

### Corner

outside corner 90°, half-round, seamless deep-drawn, stabilization through fixed bead, continuous water bend, connection duct



400/340	5	124400	36.40																
333/300	5	124405	19.25																
280/300	5	124410	18.35																
250/300	5	124415	18.05																

### Corner

inside corner 90°, half-round, seamless deep-drawn, connection duct



400/340	5	124800	36.40																
333/300	5	124805	19.25																
280/300	5	124810	18.35																
250/300	5	124815	18.05																

### Gutter Connector

with bead connector, fixing lock and flexible Z-spring, shape according to DIN 18461



400	10	125800	11.45																
333	10	125805	8.60																
280	10	125810	8.45																
250	10	125815	8.35																

### Gutter Sieve

leaf collector for pushing into gutter drain, galvanized



120	25	128405	4.95																
87-100	25	128410	4.20																
75-80	25	128420	4.00																

### Gutter Stark® Leaf Guard

for half-round gutters, length 200 resp. 100 cm, incl. supports and fixing clips, aluminium with anodization in copper colour or aluminium blank, price per meter



400/2000	20	158500	21.85																
333/2000	20	158505	19.00																
280/2000	20	158510	15.75																

### Gutter Hook

long version, with reinforcing seam, spring/spring



400-25/8+5	10	128600-LANG	7.30																
333-30/5+5	10	128605-LANG	5.95																
280-30/5+5	10	128610-LANG	5.60																
250-25/5+5	10	128615-LANG	5.25																

### Fascia Hanger

fix to the wall, spring/spring, flat to the wall against tilting effect



400	50	128625	4.10																
333	25	128630	3.20																
280	25	128635	3.10																
250	25	128640	3.05																

### Adjustable Unit

variable angle for inclination, for dimensions 333, 280, 250



333-250	25	128667	1.52																
---------	----	--------	------	--	--	--	--	--	--	--	--	--	--	--	--	--	--	--	--

### Stop End

large version, half-round, for horizontal gutter installation, for seaming (both sides)



400	25	126001	2.00																
333	25	126006	1.29																
280	25	126011	1.12																
250	25	126016	1.12																

sizes

packaging information

pc

art.no.

price

### Stop End

half-round, with rubber sealing, for simple push-on installation



333	25	126705	4.30																
280	25	126710	4.05																
250	25	126715	3.85																

### Outlet

oval, with compass card, reinforced bend, eye and bevel



400/120	10	120005	23.30																
333/100	25	120015	13.85																
280/80	25	120050	13.85																
250/80	25	120055	13.85																

### Hopper

square version, without overflow



120	4	121905	161.85																
100	4	121910	153.20																
80	4	121920	153.20																

### Hopper

small version, runoff off-centre



100	6	121990-100	63.60																
80	6	121990-80	63.60																

### Downpipe

according to EN 612, seamed, price per meter



120	8	127912	11.55																
100	8	127910	10.00																
80	8	127980	7.85																

### Bracket

for downpipe, with thread socket M10 for screw



120/M10	25	127712	3.35																
100/M10	25	127710	3.20																
80/M10	25	127780	3.20																

### Bracket

for installation on wood



100	20	128010	3.50																
80	20	128080	3.50																

### Screw

for downpipe bracket with thread socket, galvanized, M10



300/M10	25	127610-300	2.60																
200/M10	25	127610-200	1.18																
140/M10	50	127610-140	0.84																



sizes

packaging  
information

pc

art.no.

price



### Elbow 72°

single seamed, made out of pipe

size	pc	art.no.	price
120/72°	10	122405	15.60
100/72°	25	122410	11.80
80/72°	25	122430	10.95



### S-Curve

single seamed, made out of pipe

size	pc	art.no.	price
120	10	123600	18.20
100	10	123605	14.25
80	10	123620	13.85



### Downpipe Connector

size	pc	art.no.	price
120	25	127100	8.10
100	25	127105	7.30
80	25	127115	7.00



### Downpipe Junction

72°

size	pc	art.no.	price
120/120-72°	5	127012-120-72	31.95
100/100-72°	10	127010-100-72	24.15
100/80-72°	10	127010-80-72	24.15
80/80-72°	10	127080-80-72	24.15



### Rainwater Pipe Flap

with sieve

size	pc	art.no.	price
120	9	127300	62.30
100	10	127305	42.05
80	10	127315	42.05



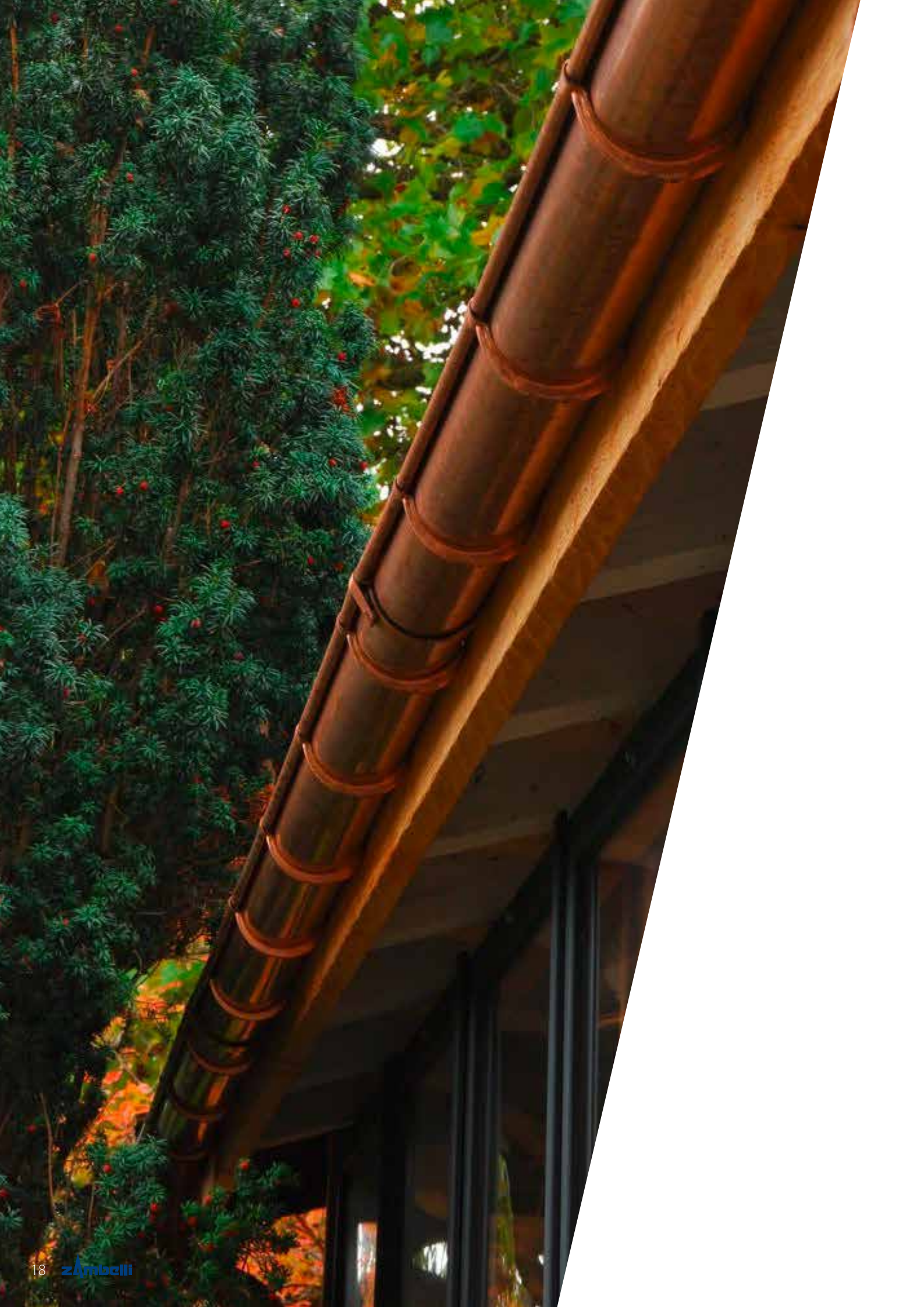
### Pipe Cover

without Bead

size	pc	art.no.	price
120/150	20	126805	7.25

with Bead

size	pc	art.no.	price
100/115-120	20	126815	5.60
80/115-120	50	126825	5.60



sizes

packaging information

pc

art.no.

price

801

826

851

876

901

926

951

976

1001

1026

**COPPER**

825

850

875

900

925

950

975

1000

1025

1050

### Gutter

according to EN 612, bead form II, price per meter, connection duct



333	15	<b>114133</b>	0.85	55.70	56.55	57.40	58.25	59.10	59.95	60.80	61.65	62.50	63.35
280	15	<b>114128</b>	0.70	47.05	47.75	48.45	49.15	49.85	50.55	51.25	51.95	52.65	53.35

### Corner

outside corner 90°, half-round, seamless deep-drawn, stabilization through fixed bead, continuous water bend, connection duct



333/300	5	<b>114405</b>	0.50	36.20	36.70	37.20	37.70	38.20	38.70	39.20	39.70	40.20	40.70
280/300	5	<b>114410</b>	0.45	34.55	35.00	35.45	35.90	36.35	36.80	37.25	37.70	38.15	38.60

### Corner

inside corner 90°, half-round, seamless deep-drawn, connection duct



333/300	5	<b>114805</b>	0.50	36.20	36.70	37.20	37.70	38.20	38.70	39.20	39.70	40.20	40.70
280/300	5	<b>114810</b>	0.45	34.55	35.00	35.45	35.90	36.35	36.80	37.25	37.70	38.15	38.60

### Gutter Connector

with bead connector, fixing lock and flexible Z-spring, shape according to DIN 18461



333	10	<b>115805</b>	0.20	14.05	14.25	14.45	14.65	14.85	15.05	15.25	15.45	15.65	15.85
280	10	<b>115810</b>	0.15	12.35	12.50	12.65	12.80	12.95	13.10	13.25	13.40	13.55	13.70

### Gutter Sieve

leaf collector for pushing into gutter drain



87-100	25	<b>118410</b>	0.10	8.85	8.95	9.05	9.15	9.25	9.35	9.45	9.55	9.65	9.75
75-80	25	<b>118420</b>	0.10	8.50	8.60	8.70	8.80	8.90	9.00	9.10	9.20	9.30	9.40

### Gutter Stark® Leaf Guard

for half-round gutters, length 200 resp. 100 cm, incl. supports and fixing clips, aluminium with anodization in copper colour or aluminium blank, price per meter



333/2000	20	<b>118505</b>		31.10	31.10	31.10	31.10	31.10	31.10	31.10	31.10	31.10	31.10
280/2000	20	<b>118510</b>		26.85	26.85	26.85	26.85	26.85	26.85	26.85	26.85	26.85	26.85

### Gutter Hook

long version, with reinforcing seam, spring/spring



333-30/5+5	10	<b>118605-LANG</b>	0.35	24.70	25.05	25.40	25.75	26.10	26.45	26.80	27.15	27.50	27.85
280-30/5+5	10	<b>118610-LANG</b>	0.30	21.45	21.75	22.05	22.35	22.65	22.95	23.25	23.55	23.85	24.15

### Fascia Hanger

fix to the wall, spring/spring, flat to the wall against tilting effect



333	25	<b>118630</b>	0.10	7.70	7.80	7.90	8.00	8.10	8.20	8.30	8.40	8.50	8.60
280	25	<b>118635</b>	0.10	7.10	7.20	7.30	7.40	7.50	7.60	7.70	7.80	7.90	8.00

### Adjustable Unit

variable angle for inclination, for dimensions 333, 280, 250



333-250	25	<b>118667</b>	0.15	8.35	8.50	8.65	8.80	8.95	9.10	9.25	9.40	9.55	9.70
---------	----	---------------	------	------	------	------	------	------	------	------	------	------	------

### Stop End

large version, half-round, for horizontal gutter installation, for seaming (both sides)



333	25	<b>116006</b>	0.06	3.65	3.71	3.77	3.83	3.89	3.95	4.01	4.07	4.13	4.19
280	25	<b>116011</b>	0.05	3.29	3.34	3.39	3.44	3.49	3.54	3.59	3.64	3.69	3.74

### Stop End

half-round, with rubber sealing, for simple push-on installation



333	25	<b>116705</b>	0.10	7.50	7.60	7.70	7.80	7.90	8.00	8.10	8.20	8.30	8.40
280	25	<b>116710</b>	0.09	6.69	6.78	6.87	6.96	7.05	7.14	7.23	7.32	7.41	7.50

sizes

packaging  
information  
pc

**COPPER**

art.no.	price	801	826	851	876	901	926	951	976	1001	1026
		825	850	875	900	925	950	975	1000	1025	1050



**Outlet**

oval, with compass card, reinforced bend, eye and bevel

333/100	25	<b>110015</b>	0.30	19.10	19.40	19.70	20.00	20.30	20.60	20.90	21.20	21.50	21.80
280/80	25	<b>110050</b>	0.30	19.10	19.40	19.70	20.00	20.30	20.60	20.90	21.20	21.50	21.80



**Hopper**

square version, without overflow

100	4	<b>11910</b>	2.50	208.15	210.65	213.15	215.65	218.15	220.65	223.15	225.65	228.15	230.65
80	4	<b>11920</b>	2.50	203.85	206.35	208.85	211.35	213.85	216.35	218.85	221.35	223.85	226.35



**Downpipe**

according to EN 612, price per meter

100	8	<b>117910</b>	0.85	57.15	58.00	58.85	59.70	60.55	61.40	62.25	63.10	63.95	64.80
80	8	<b>117980</b>	0.75	47.05	47.80	48.55	49.30	50.05	50.80	51.55	52.30	53.05	53.80



**Bracket**

for downpipe, with thread socket M10 for screw

100/M10	25	<b>117710</b>	0.05	8.00	8.05	8.10	8.15	8.20	8.25	8.30	8.35	8.40	8.45
80/M10	25	<b>117780</b>	0.05	7.65	7.70	7.75	7.80	7.85	7.90	7.95	8.00	8.05	8.10



**Screw**

for downpipe bracket with thread socket, yellow chromated, M10

300/M10	25	<b>117610-300</b>		2.80	2.80	2.80	2.80	2.80	2.80	2.80	2.80	2.80	2.80
200/M10	25	<b>117610-200</b>		1.27	1.27	1.27	1.27	1.27	1.27	1.27	1.27	1.27	1.27
140/M10	50	<b>117610-140</b>		0.90	0.90	0.90	0.90	0.90	0.90	0.90	0.90	0.90	0.90

sizes

packaging  
information  
pc

**COPPER**

art.no.	price	801	826	851	876	901	926	951	976	1001	1026
		825	850	875	900	925	950	975	1000	1025	1050



**Elbow 72°**  
one-piece, tapered

size	pc	art.no.	price	801	826	851	876	901	926	951	976	1001	1026
100/72°	25	<b>112410</b>	0.25	15.55	15.80	16.05	16.30	16.55	16.80	17.05	17.30	17.55	17.80
80/72°	25	<b>112430</b>	0.20	13.80	14.00	14.20	14.40	14.60	14.80	15.00	15.20	15.40	15.60



**Beaded Elbow**  
for downpipe runoff

size	pc	art.no.	price	801	826	851	876	901	926	951	976	1001	1026
100/72°	25	<b>113110</b>	0.25	22.50	22.75	23.00	23.25	23.50	23.75	24.00	24.25	24.50	24.75
80/72°	25	<b>113130</b>	0.20	20.95	21.15	21.35	21.55	21.75	21.95	22.15	22.35	22.55	22.75



**S-Curve**  
tapered

size	pc	art.no.	price	801	826	851	876	901	926	951	976	1001	1026
100	10	<b>113605</b>	0.30	26.85	27.15	27.45	27.75	28.05	28.35	28.65	28.95	29.25	29.55
80	10	<b>113620</b>	0.25	24.90	25.15	25.40	25.65	25.90	26.15	26.40	26.65	26.90	27.15



**Downpipe Connector**

size	pc	art.no.	price	801	826	851	876	901	926	951	976	1001	1026
100	25	<b>117105</b>	0.15	8.35	8.50	8.65	8.80	8.95	9.10	9.25	9.40	9.55	9.70
80	25	<b>117115</b>	0.10	7.00	7.10	7.20	7.30	7.40	7.50	7.60	7.70	7.80	7.90



**Downpipe Junction**  
72°

size	pc	art.no.	price	801	826	851	876	901	926	951	976	1001	1026
100/100-72°	10	<b>117010-100-72</b>	0.50	39.15	39.65	40.15	40.65	41.15	41.65	42.15	42.65	43.15	43.65
100/80-72°	10	<b>117010-80-72</b>	0.50	39.15	39.65	40.15	40.65	41.15	41.65	42.15	42.65	43.15	43.65
80/80-72°	10	<b>117080-80-72</b>	0.45	37.70	38.15	38.60	39.05	39.50	39.95	40.40	40.85	41.30	41.75

**Rainwater Pipe Flap**  
with sieve

size	pc	art.no.	price	801	826	851	876	901	926	951	976	1001	1026
100	10	<b>117305</b>	0.75	57.65	58.40	59.15	59.90	60.65	61.40	62.15	62.90	63.65	64.40
80	10	<b>117315</b>	0.75	57.65	58.40	59.15	59.90	60.65	61.40	62.15	62.90	63.65	64.40



**Pipe Cover with Bead**

size	pc	art.no.	price	801	826	851	876	901	926	951	976	1001	1026
100/115-120	20	<b>116815</b>	0.10	8.00	8.10	8.20	8.30	8.40	8.50	8.60	8.70	8.80	8.90
80/115-120	20	<b>116825</b>	0.10	8.00	8.10	8.20	8.30	8.40	8.50	8.60	8.70	8.80	8.90



sizes

packaging  
information  
pc

TITANIUM-ZINC

art.no.	price	1251	1501	1751	2001	2251	2501	2751	3001
		1500	1750	2000	2250	2500	2750	3000	3250

### Gutter

according to EN 612, bead form II, price per meter, connection duct

333	15	<b>134133</b>	0.80	19.50	20.30	21.10	21.90	22.70	23.50	24.30	25.10		
280	15	<b>134128</b>	0.75	17.00	17.75	18.50	19.25	20.00	20.75	21.50	22.25		

### Corner

outside corner 90°, half-round, seamless deep-drawn, stabilization through fixed bead, continuous water bend, connection duct

333/300	5	<b>134405</b>	0.50	19.70	20.20	20.70	21.20	21.70	22.20	22.70	23.20		
280/300	5	<b>134410</b>	0.45	19.10	19.55	20.00	20.45	20.90	21.35	21.80	22.25		

### Corner

inside corner 90°, half-round, seamless deep-drawn, connection duct

333/300	5	<b>134805</b>	0.50	19.70	20.20	20.70	21.20	21.70	22.20	22.70	23.20		
280/300	5	<b>134810</b>	0.45	19.10	19.55	20.00	20.45	20.90	21.35	21.80	22.25		

### Gutter Connector

with bead connector, fixing lock and flexible Z-spring, shape according to DIN 18461

333	10	<b>135805</b>	0.15	8.50	8.65	8.80	8.95	9.10	9.25	9.40	9.55		
280	10	<b>135810</b>	0.10	8.00	8.10	8.20	8.30	8.40	8.50	8.60	8.70		

### Gutter Sieve

leaf collector for pushing into gutter drain, galvanized

87-100	25	<b>128410</b>		4.20									
75-80	25	<b>128420</b>		4.00									

### Gutter Stark® Leaf Guard

for half-round gutters, length 200 resp. 100 cm, incl. supports and fixing clips, aluminium with anodization in copper colour or aluminium blank, price per meter

333/2000	20	<b>158505</b>		19.00									
280/2000	20	<b>158510</b>		15.75									

### Gutter Hook

long version, with reinforcing seam, spring/spring

333-30/5+5	10	<b>128605-LANG</b>		5.95									
280-30/5+5	10	<b>128610-LANG</b>		5.60									

### Fascia Hanger

fix to the wall, spring/spring, flat to the wall against tilting effect

333	25	<b>128630</b>		3.20									
280	25	<b>128635</b>		3.10									

### Adjustable Unit

variable angle for inclination, for dimensions 333, 280, 250

333-250	25	<b>128667</b>		1.52									
---------	----	---------------	--	------	--	--	--	--	--	--	--	--	--

### Stop End

large version, half-round, for horizontal gutter installation, for seaming (both sides)

333	25	<b>136006</b>	0.05	1.66	1.71	1.76	1.81	1.86	1.91	1.96	2.01		
280	25	<b>136011</b>	0.03	1.35	1.38	1.41	1.44	1.47	1.50	1.53	1.56		

### Stop End

half-round, with rubber sealing, for simple push-on installation

333	25	<b>136705</b>	0.10	4.45	4.55	4.65	4.75	4.85	4.95	5.05	5.15		
280	25	<b>136710</b>	0.09	3.87	3.96	4.05	4.14	4.23	4.32	4.41	4.50		

sizes

packaging  
information  
pc

TITANIUM-ZINC

art.no.	price	1251	1501	1751	2001	2251	2501	2751	3001
		1500	1750	2000	2250	2500	2750	3000	3250



### Outlet

oval, with compass card, reinforced bend, eye and bevel

333/100	25	<b>130015</b>	0.30	10.25	10.55	10.85	11.15	11.45	11.75	12.05	12.35		
280/80	25	<b>130050</b>	0.20	10.45	10.65	10.85	11.05	11.25	11.45	11.65	11.85		



### Hopper

square version, without overflow

100	4	<b>131910</b>	1.40	132.90	134.30	135.70	137.10	138.50	139.90	141.30	142.70		
80	4	<b>131920</b>	1.40	128.45	129.85	131.25	132.65	134.05	135.45	136.85	138.25		



### Fascia Outlet

for drainage of flat roofs, with grommet

120	10	<b>137099-120/110</b>	0,50	114.70	115.20	115.70	116.20	116.70	117.20	117.70	118.20		
100	10	<b>137099-100/110</b>	0,50	114.70	115.20	115.70	116.20	116.70	117.20	117.70	118.20		
100	10	<b>137099-100/75</b>	0,50	114.70	115.20	115.70	116.20	116.70	117.20	117.70	118.20		
80	10	<b>137099-80/75</b>	0,50	114.70	115.20	115.70	116.20	116.70	117.20	117.70	118.20		



### Downpipe

according to EN 612, price per meter, length 2 m

100	8	<b>137910</b>	0.75	20.65	21.40	22.15	22.90	23.65	24.40	25.15	25.90		
80	8	<b>137980</b>	0.80	17.55	18.35	19.15	19.95	20.75	21.55	22.35	23.15		



### Bracket

for downpipe, with thread socket M10 for screw

100/M10	25	<b>127710</b>		3.20									
80/M10	25	<b>127780</b>		3.20									



### Screw

for downpipe bracket with thread socket, galvanized, M10

300/M10	25	<b>127610-300</b>		2.60									
200/M10	25	<b>127610-200</b>		1.18									
140/M10	50	<b>127610-140</b>		0.84									



sizes

packaging  
information  
pc

TITANIUM-ZINC

art.no.	price	1251	1501	1751	2001	2251	2501	2751	3001
		1500	1750	2000	2250	2500	2750	3000	3250



**Elbow 72°**  
one-piece, tapered

100/72°	25	132410	0.25	8.30	8.55	8.80	9.05	9.30	9.55	9.80	10.05
80/72°	25	132430	0.20	8.05	8.25	8.45	8.65	8.85	9.05	9.25	9.45



**Beaded Elbow**  
for downpipe runoff

100/72°	25	133110	0.25	16.00	16.25	16.50	16.75	17.00	17.25	17.50	17.75
80/72°	25	133130	0.20	15.60	15.80	16.00	16.20	16.40	16.60	16.80	17.00



**S-Curve**  
tapered

100	10	133605	0.30	15.45	15.75	16.05	16.35	16.65	16.95	17.25	17.55
80	10	133620	0.25	14.70	14.95	15.20	15.45	15.70	15.95	16.20	16.45



**Downpipe Connector**

100	25	137105	0.15	4.00	4.15	4.30	4.45	4.60	4.75	4.90	5.05
80	25	137115	0.10	3.80	3.90	4.00	4.10	4.20	4.30	4.40	4.50



**Downpipe Junction**  
72°

100/100-72°	10	137010-100-72	0.45	23.05	23.50	23.95	24.40	24.85	25.30	25.75	26.20
100/80-72°	10	137010-80-72	0.45	23.05	23.50	23.95	24.40	24.85	25.30	25.75	26.20
80/80-72°	10	137080-80-72	0.40	22.70	23.10	23.50	23.90	24.30	24.70	25.10	25.50



**Rainwater Pipe Flap**  
with sieve

100	10	137305	0.50	35.25	35.75	36.25	36.75	37.25	37.75	38.25	38.75
80	10	137315	0.50	35.25	35.75	36.25	36.75	37.25	37.75	38.25	38.75

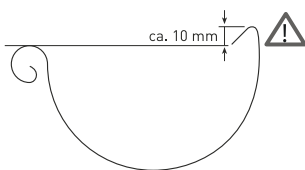


**Pipe Cover with Bead**

100/115-120	20	136815	0.10	4.90	5.00	5.10	5.20	5.30	5.40	5.50	5.60
80/115-120	20	136825	0.10	4.90	5.00	5.10	5.20	5.30	5.40	5.50	5.60

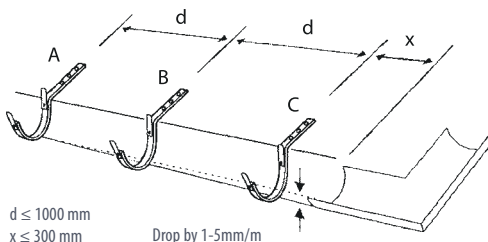
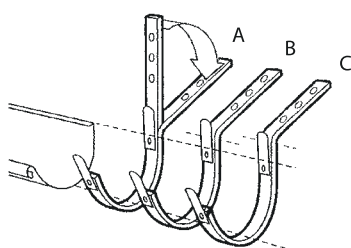
# INSTALLATION INSTRUCTIONS

## Gutter Decline



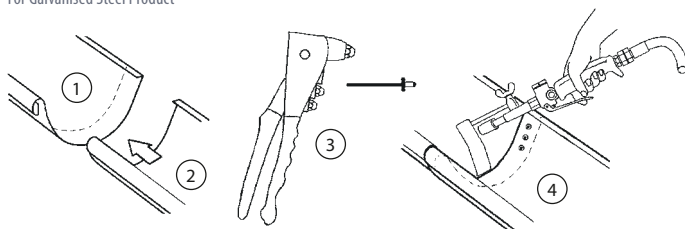
**Video Installation Instructions**  
 You can find our installation instructions as video on our homepage or on [installation-movie.zambelli.com](http://installation-movie.zambelli.com)

## Installation of Gutter Hooks



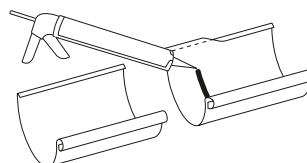
## Riveting and soldering

For Galvanised Steel Product



## Gluing

For robust Colour Coated Products



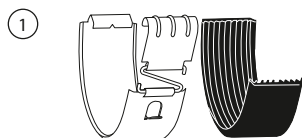
For robust Colour Coated Products:  
 Add two lines of Dicht 7 adhesive to cleaned and dried surface at least 8mm from the end of the gutter. Overlap both gutters adequately and fold the rear return back over



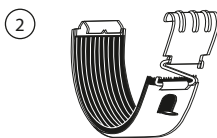
**NEVER USE AN ANGLE GRINDER TO CUT – HEAT DAMAGES ITS SELF-HEALING PROPERTIE**

## Gutter Connector

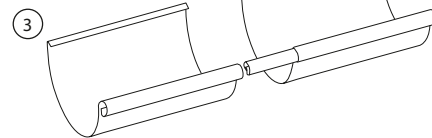
Gutter connector with clip for gutters, fit according to DIN 18461



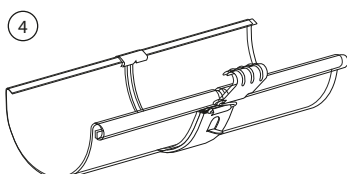
Lift out the 'security tab' (a bead connector is the perfect tool).



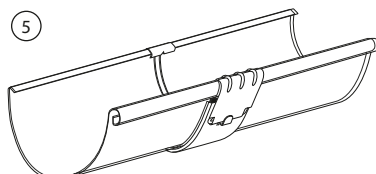
Match the rubber seal ca 3mm below the notch at the rear of the gutter connector, leaving a small tongue to the front.



Push the bead connector in up to the fixing point. (Not required for repairs)  
 Leave a 5mm gap between gutters to allow for expansion.

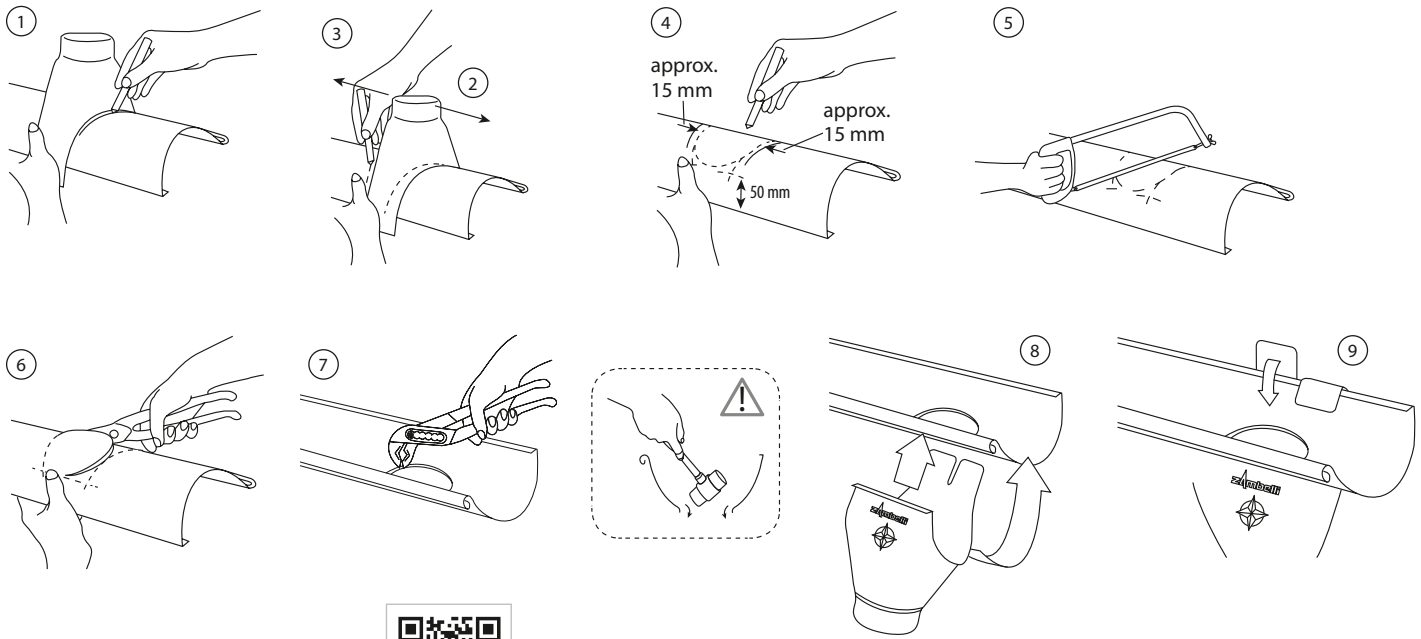


Mount the gutter connector to the back edge of the gutter first, and then pull it down and toward the front.

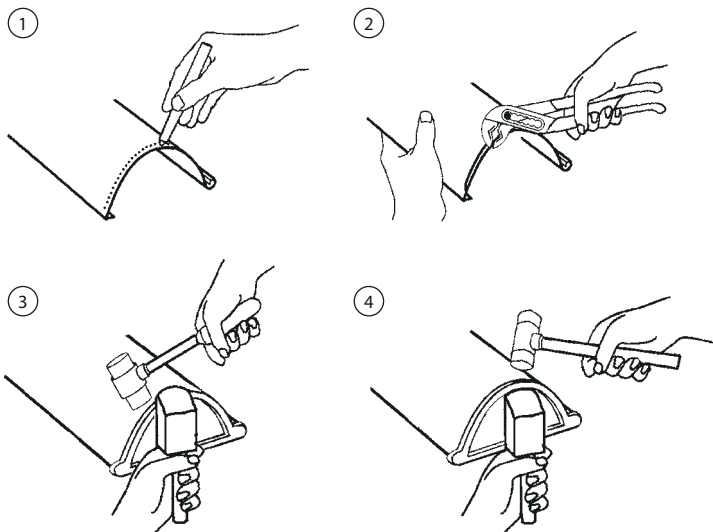


Hook the 'claw' of the gutter connector over the bead and snap it closed while pressing against the inside of the bead. Press closed the security tab with a thumb.

## Installation of Outlet



## Seaming Stop End

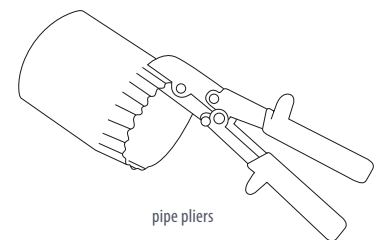
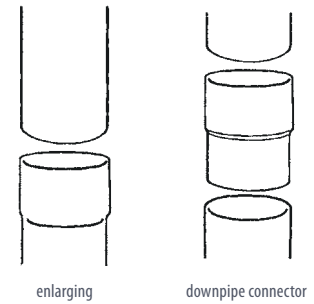


## Stop End



Stop end for simple push-on installation. Please insert the rubber sealing with the three lips towards the gutter.

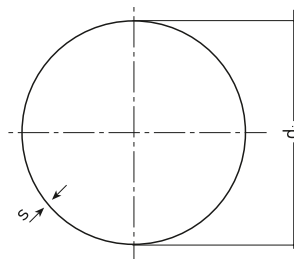
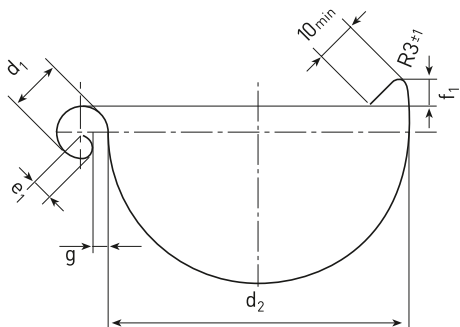
## Downpipe connections



## Half-Round and Box Gutters DIN 18461

### Half-Round Gutter (H)

$d_1$  and  $d_2$  are external dimensions



### Half-Round Gutter

size	280	333	400
------	-----	-----	-----

### Material Width

+1/-2	280	333	400
$d_1$ ±1	18	20	22
$d_2$ +2/0	127	153	192
$e_1$ ±1	7	9	9
$f_1$ min.	11	11	11
$g$ ±1	6	6	6

### Round Downpipes

size	80	100	120
------	----	-----	-----

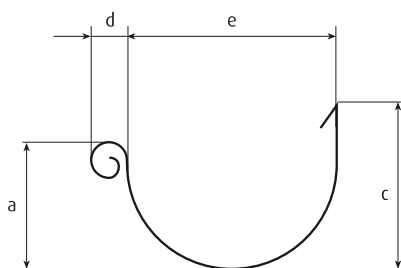
$d_1 + 1$	80	100	120
-----------	----	-----	-----

$d_1$  = Internal diameter upper end

## Gutters and Downpipes (Metal) EN 612

Picture 1

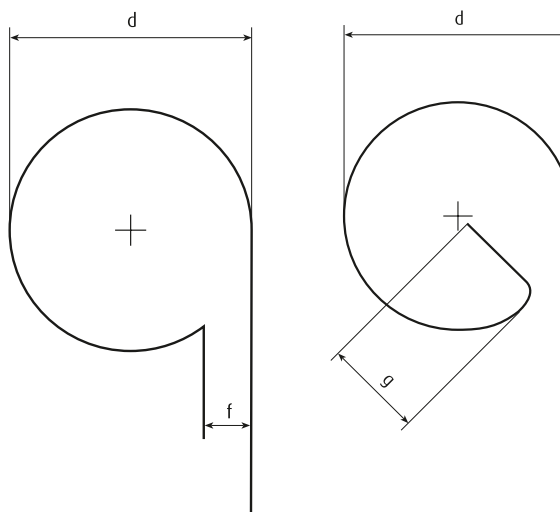
Examples for Gutters



- a height of gutter frontside
- c height of backside
- d bead size (diameter or width)
- e gutter opening

Picture 2

Bead Forms



**Form I**  
round  
 $f$  = max. 3 mm

**Form II**  
 $g$  = round with bend

Table 1: Downpipes, Seams – Execution of Seams

	Al	Cu	St	Inox	Zn	overlap in mm	
						Class X min.	Class Y min.
soldered	○	●	○	○	●	5	1
brazed	○	●	○	○	○	3	3
folded	●	●	●	●	●	6	6
welded	●	●	●	●	●	depending on welding method	

● = compatible  
○ = incompatible

Table 2: Gutters, Bead Diameters and Hight of Gutter Frontside

material width w	bead-Ø d		hight of gutter frontside	sum of bead diameter and hight of gutter frontside
	Class X min.	Class Y min.	Dimension a according to image 1 min.	Dimension a + d according to image 1 and image 2 min.
w ≤ 200	16	14	40	70
200 < w ≤ 250	16	14	50	75
250 < w ≤ 333	18	14	55	75
333 < w ≤ 400	20	18	65	90
400 < w	20	20	75	100

## Compatibility of Metals

	Al	Cu	St	Zn	Pb	VA
Al aluminium	●	○	●	●	●	●
Cu copper	○	●	○	○	●	●
St galvanized steel	●	○	●	●	●	●
Zn zink	●	○	●	●	●	●
Pb lead	●	●	●	●	●	●
VA stainless steel	●	●	●	●	●	●

● = compatible  
○ = incompatible

## Material Weight Calculation

Material	density	0.50 mm	0.60 mm	0.65 mm	0.70 mm	0.80 mm	1.00 mm
copper	8.93	4.46 kg	5.35 kg	5.80 kg	6.25 kg	7.14 kg	8.93 kg
titanzink	7.12	3.56 kg	4.27 kg	4.62 kg	4.98 kg	5.69 kg	7.12 kg
aluminium	2.70	1.35 kg	1.62 kg	1.75 kg	1.89 kg	2.16 kg	2.70 kg
stainless steel	7.90	3.95 kg	4.74 kg	5.13 kg	5.53 kg	6.32 kg	7.90 kg
galvanized	7.86	3.93 kg	4.71 kg	5.10 kg	5.50 kg	6.28 kg	7.86 kg

Weights are for 1 m<sup>2</sup> surface

## Data Chart Size DIN 18460

surface roof (m <sup>2</sup> )	downpipe Ø	dedicated gutter
0 – 37	60	200 (10tlg.)
37 – 83	80	250 (8tlg.)
83 – 150	100	333 (6tlg.)
150 – 243	120	400 (5tlg.)
243 – 443	150	500 (4tlg.)



**Zambelli**  
**Fertigungs GmbH & Co. KG**  
Passauer Strasse 3 + 5  
94481 Grafenau  
Germany

Tel. +49 85 55 409 - 0  
E-mail [de-sales@zambelli.com](mailto:de-sales@zambelli.com)  
[www.zambelli.com](http://www.zambelli.com)